

MONTHLY MEMBERSHIP PROGRESS REPORT

LOCATION MINNESOTA

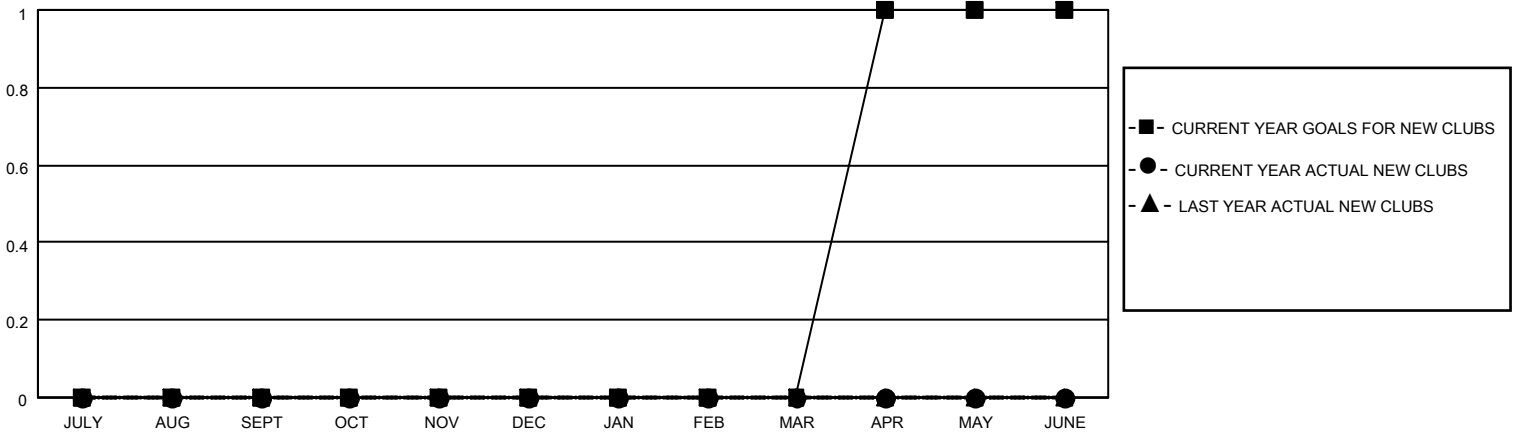
District 5M 8

Results as of: 8/31/2021

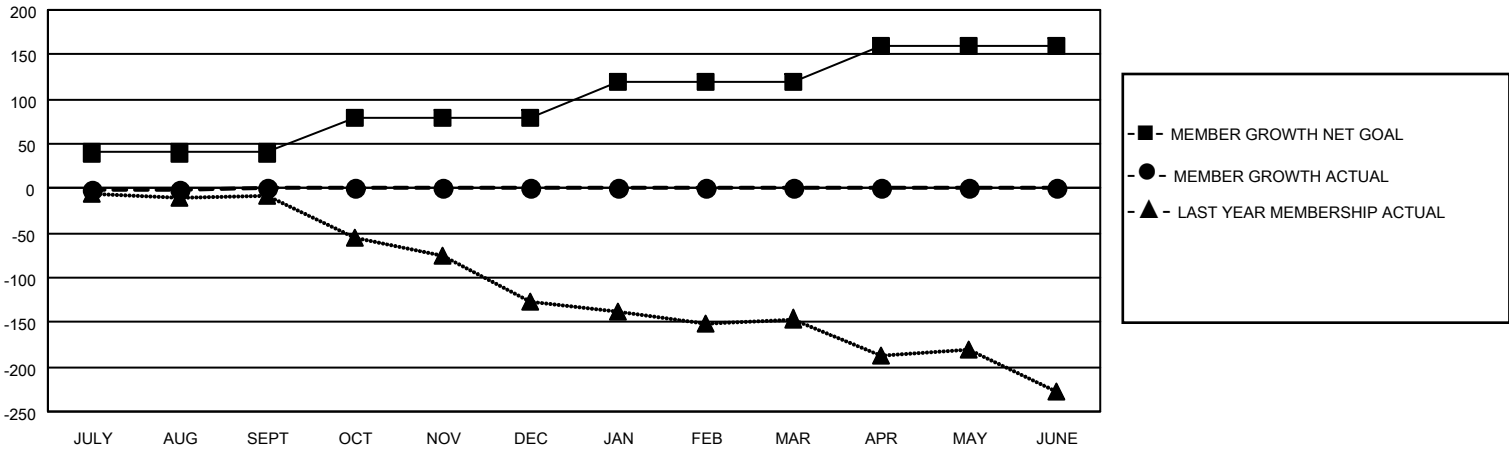
Clubs			
RESULTS FOR 2021-2022			
QUARTER	NEW CLUB GOAL	NEW CLUBS	DROPPED CLUBS
JULY/AUG/SEPT	0	0	2
OCT/NOV/DEC	0	0	0
JAN/FEB/MAR	0	0	0
APR/MAY/JUNE	1	0	0

Members			
RESULTS FOR 2021-2022			
QUARTER	MEMBER GROWTH NET GOAL	MEMBER GROWTH ACTUAL	DROPPED MEMBERS ACTUAL (including transfers)
JULY/AUG/SEPT	40	37	34
OCT/NOV/DEC	40	0	0
JAN/FEB/MAR	40	0	0
APR/MAY/JUNE	40	0	0

GOALS AND ACTUAL NEW CLUBS CUMULATIVE



GOALS AND ACTUAL MEMBERS CUMULATIVE



<p>DROPPED CLUBS: 2</p>	<p>18 CLUBS OF 72 ADDED 1 OR MORE NEW MEMBERS</p>	<p style="text-align: center;"><u>GENDER DISTRIBUTION</u></p> <p>MALE 1,971 (71.67%) FEMALE 779 (28.33%) NON BINARY 0 (0.00%) PREFER NOT TO ANSWER 0 (0.00%)</p>
<p><u>DROPPED MEMBERS</u></p> <p>DECEASED 6 CLUB CANCELLED 0 OTHER 28 TOTAL 34</p>	<p style="text-align: center;">CLICK HERE FOR CUMULATIVE MEMBERSHIP DATA</p>	<p>TOTAL FAMILY UNIT MEMBERS 540 FAMILY MEMBERS PAYING HALF DUES 272</p>